

Oracle Analytics Cloud From A to Z

ITOUG, 30th Jan - 1st Feb 2019



Francesco Tisiot

BI Tech Lead at Rittman Mead

 Verona, Italy

 Rittman Mead Blog


 10 Years Experience in BI/Analytics

 francesco.tisiot@rittmanmead.com

 @FTisiot

 Oracle ACE

Christian Berg

- Owner of Dimensionality GmbH in Switzerland
- 17 years of Analytics and counting
- Oracle ACE Director Business Analytics 
- Speaker at OpenWorld, KScope, regional Oracle User Groups...
- Full-time IRC (*freenode* | *#obihackers*) and OTN participant
- Part-time blogger on Analytics, BI, DWH (<http://dimensionality.ch>)
- Oracle Analytics trainer for Oracle University since 10+ years

500+ Technical Experts Helping Peers Globally

ORACLE[®]
ACE Program



3 Membership Tiers

- Oracle ACE Director
- Oracle ACE
- Oracle ACE Associate

bit.ly/OracleACEProgram

Connect:

✉ oracle-ace_ww@oracle.com

f Facebook.com/oracleaces

🐦 [@oracleace](https://twitter.com/oracleace)



Oracle Analytics Cloud - What is it?



Functions, Features & Architectures

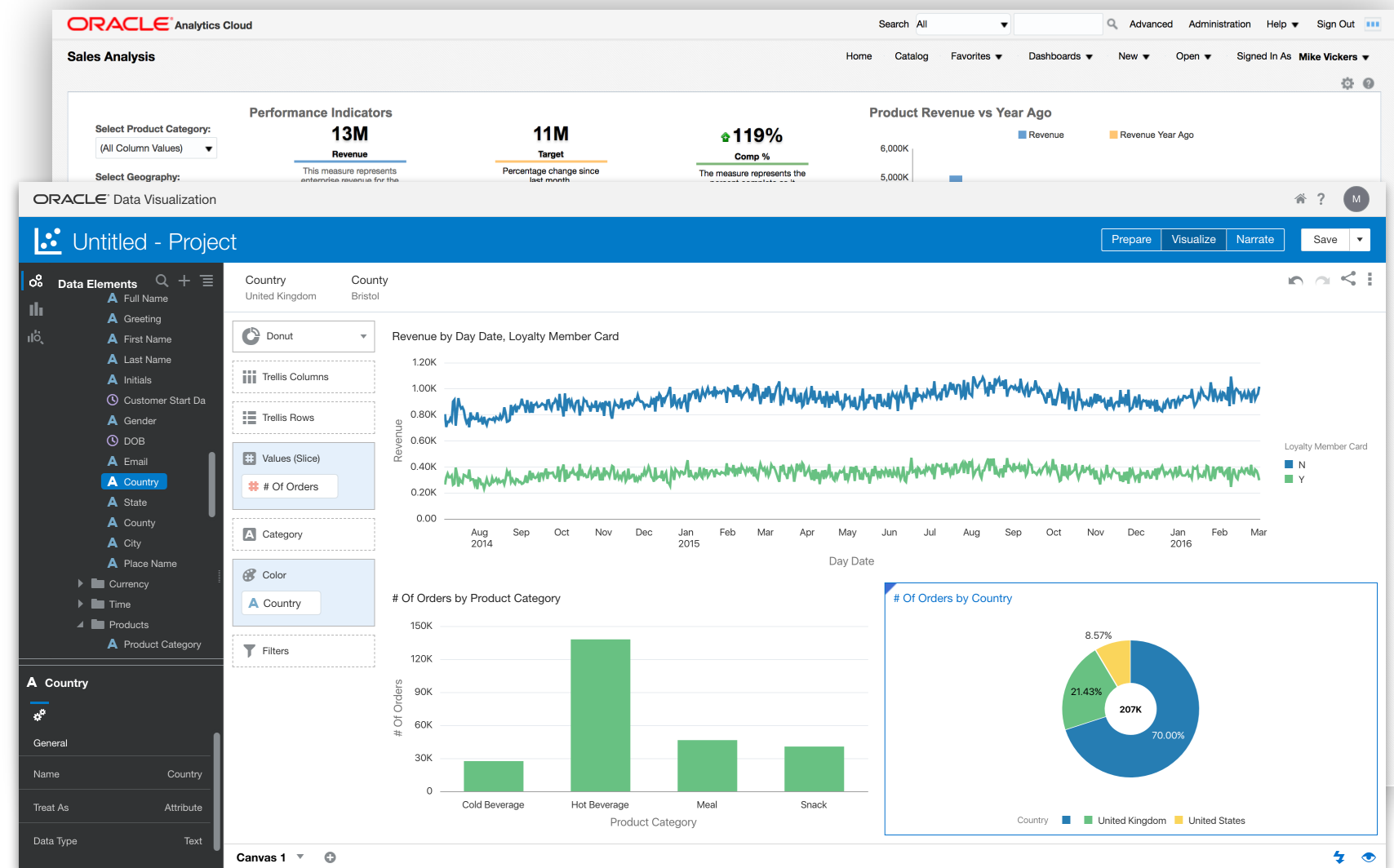
Oracle Analytics Cloud

- Oracle's complete suite of Platform Services (PaaS) for unified analytics in the cloud
- Delivered entirely in the cloud:
 - ▶ No infrastructure footprint
 - ▶ Flexibility to scale up or down based on your immediate needs
 - ▶ Simplified, metered licensing
- Several options to suit your needs:
 - ▶ Oracle or customer/partner managed services
 - ▶ Functionality bundled into 3 editions



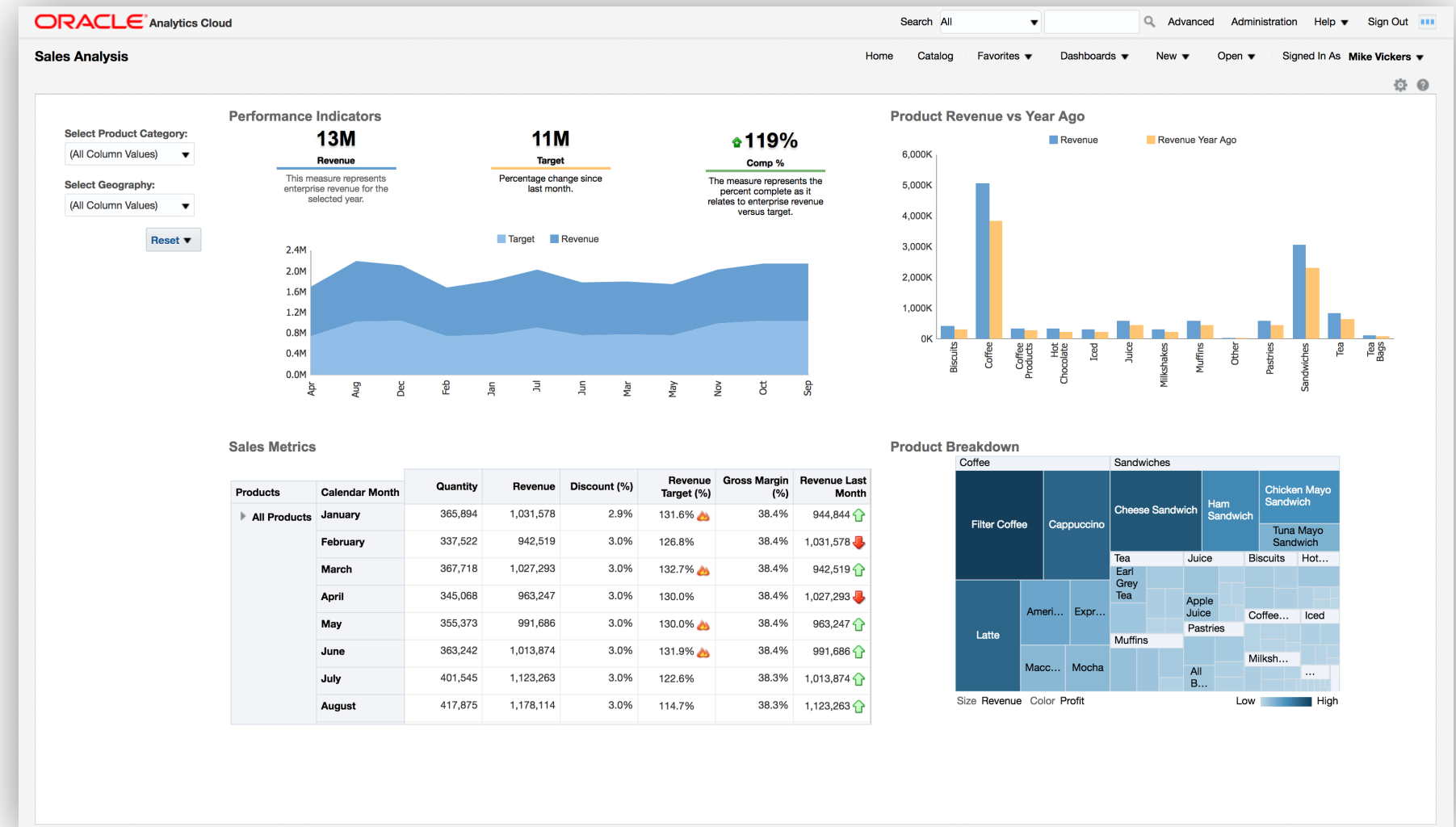
Functions

- OAC supports **every** type of analytics workload across your organisation
- *Classic* enterprise BI:
 - ▶ Analysis & dashboarding
 - ▶ Published reporting
 - ▶ Enterprise Performance Management
- *Modern* departmental/personal discovery:
 - ▶ Extended data mashup & modelling
 - ▶ Data preparation, exploration & visualisation
 - ▶ Data science & machine learning



Classic Enterprise BI

- Similar User Experience to OBIEE 12c
 - ▶ Centrally maintained & governed
 - ▶ Semantic model remains key
- Interactive Dashboards
 - ▶ Ideal for KPI measurement & monitoring
 - ▶ Guided navigation paths
- BI Publisher
 - ▶ Highly formatted, burst outputs
- Action Framework
 - ▶ Navigation actions
 - ▶ Scheduled agents



Modern Data Discovery

- Data Preparation

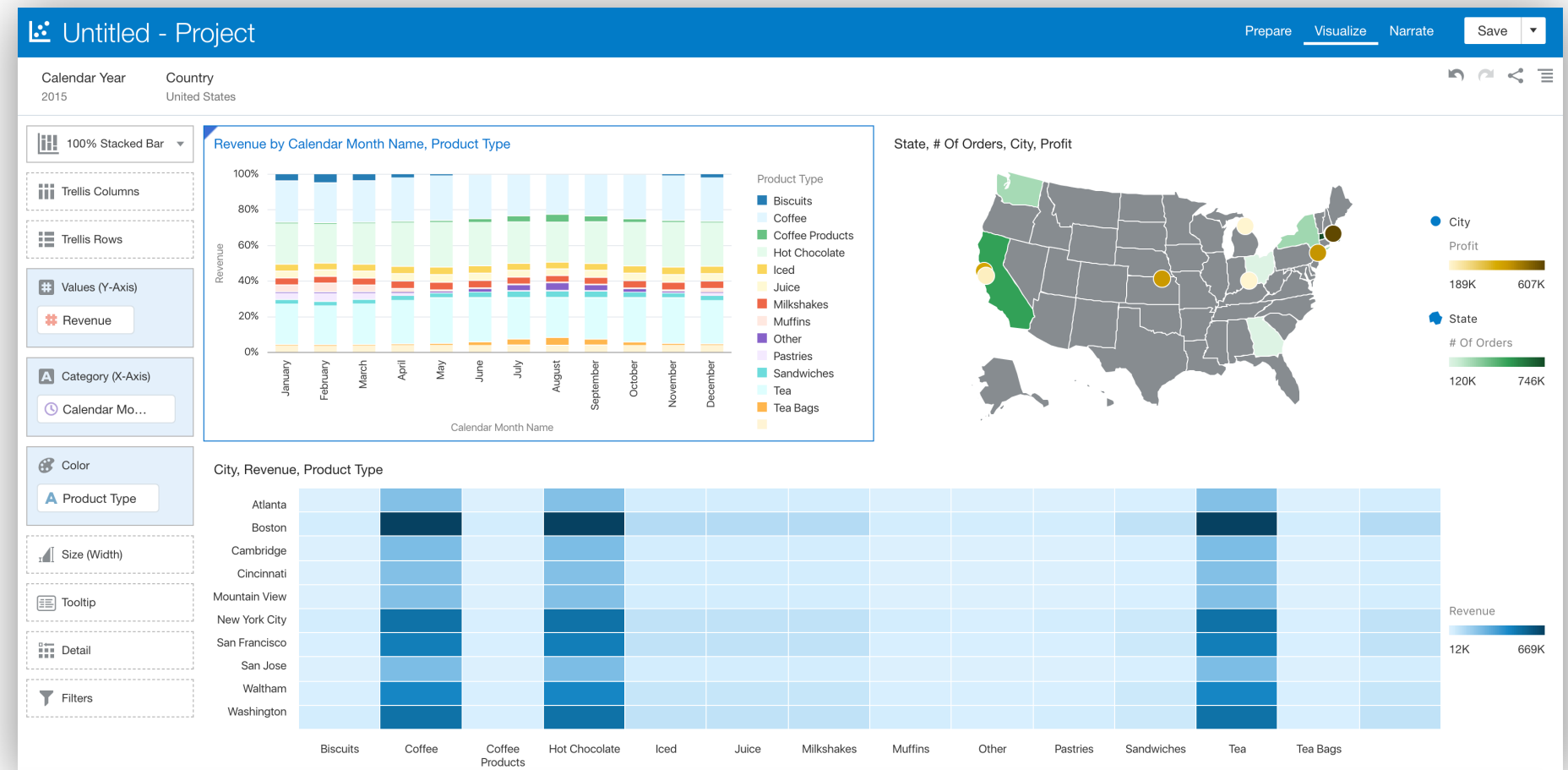
- ▶ Acquire data from multiple connections
- ▶ Apply enrichments data prior to analysis
- ▶ Define repeatable preparation flows

- Data Visualisation

- ▶ Create visual insights rapidly
- ▶ Construct narrated storyboards
- ▶ Share findings

- Machine Learning

- ▶ Build & train ML models
- ▶ Apply model to new data sets



Mobile Options

- Mobile Web & BI Mobile App
 - ▶ All DV projects will auto-render on mobile devices
 - ▶ The heritage mobile app supports all OAC content
- Synopsis Mobile App
 - ▶ Automatic Excel/CSV ingestion & analysis
 - ▶ Extending to all DV supported sources
- Day by Day
 - ▶ Included within Enterprise Edition
 - ▶ Search driven analytics
 - ▶ Voice recognition allows you to verbalise questions
 - ▶ Embedded learning enables a tailored experience



Security & Access

- Secure Access
 - ▶ Remote hosts access cloud via SSH
 - ▶ Specific access rules can be configured
- Users & Roles in OAC can be managed via two methods:
 - ▶ Embedded Weblogic LDAP server
 - ▶ Oracle Identity Cloud Service (IDCS)
 - Shared model across all cloud services
 - Supports SSO
 - Enables AD integration
 - ▶ IDCS only relevant for Universal Credit

Access Rules Create Rule

You can use access rules to control network access to service components. On this page, you can manage your access rules.

Results per page: 10 6 result(s) as of Oct 9, 2018 4:59:04 PM UTC

Status	Rule Name	Source	Destination	Ports	Protocol	Description	Rule Type	Actions
	ora_http2oac_http	PUBLIC-INTERNET	BI_ANALYTIC_SERVER	80	TCP	Permit public http access to ...	DEFAULT	
	ora_https2oac_https	PUBLIC-INTERNET	BI_ANALYTIC_SERVER	443	TCP	Permit public https access to...	DEFAULT	
	ora_ssh2oac_ssh	PUBLIC-INTERNET	BI_ANALYTIC_SERVER	22	TCP	Permit ssh access to analyti...	DEFAULT	
	sys_infra2bi_admin_ssh	PAAS-INFRA	BI_ADMIN_HOST	22	TCP	DO NOT MODIFY: Permit P...	SYSTEM	
	ora_lb2analytic_server...		BI_ANALYTIC_SERVER	80	TCP	Do not edit or remove: Perm...	DEFAULT	
	sys_bics2db_dbport	BI_ANALYTIC_S...	/Compute-604218755/...	1521	TCP	Permit connection to DBAA...	SYSTEM	

ORACLE Identity Cloud Service

Welcome mike.vickers@rittmanmead.com

Here's what you can do:

- Onboarding Users and Groups
- Onboarding Applications
- Managing Security Settings
- Auditing the System, Users, and Groups
- Performing Self-Service Diagnostics
- Customizing the Service
- Performing End-User Self Service

Filter by Date Range: Last 30 Days

Users	Applications	Groups	Passwords	Logins	All Reports
10 Total	57 Total	2 Total	16 Resets	43 Total	5 Total
0 Created, 0 Removed	14 Created, 7 Removed	0 Created, 0 Removed	1 Failed Attempts	12 Failed Attempts	

Versions, Licensing & Provisioning



Two Service Options



Analytics Cloud

Services managed by **You**:

Based on Oracle Cloud Infrastructure Classic



Autonomous Analytics Cloud

Services managed by **Oracle**:

Backup & Recovery
Service Monitoring
Patching & Upgrades
Test & Production instances
Based on Oracle Cloud Infrastructure (OCI)

Two Service Options



~~Analytics Cloud~~

Services managed by **You**:

Based on Oracle Cloud Infrastructure Classic

Analytics Cloud Classic (OACC)



~~Autonomous Analytics Cloud~~

Analytics Cloud (OAC)

Services managed by **Oracle**:

Backup & Recovery

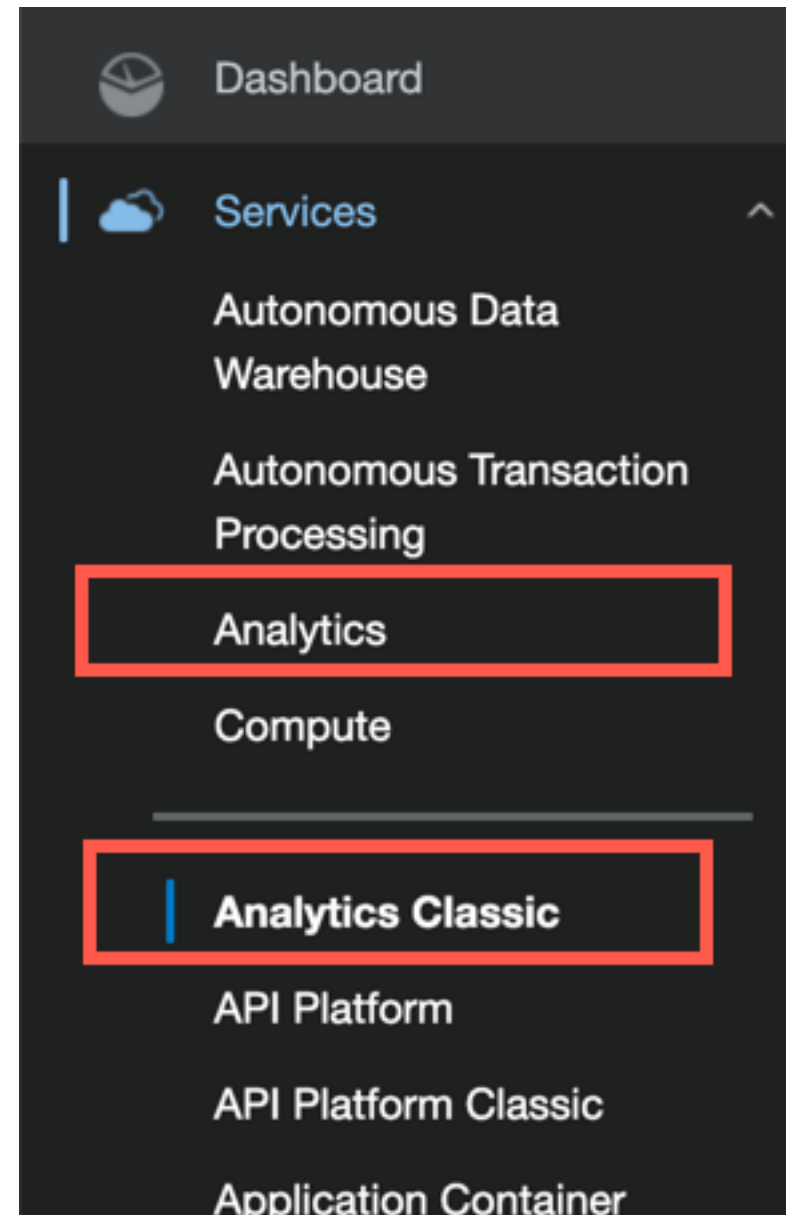
Service Monitoring

Patching & Upgrades

Test & Production instances

Based on Oracle Cloud Infrastructure (OCI)

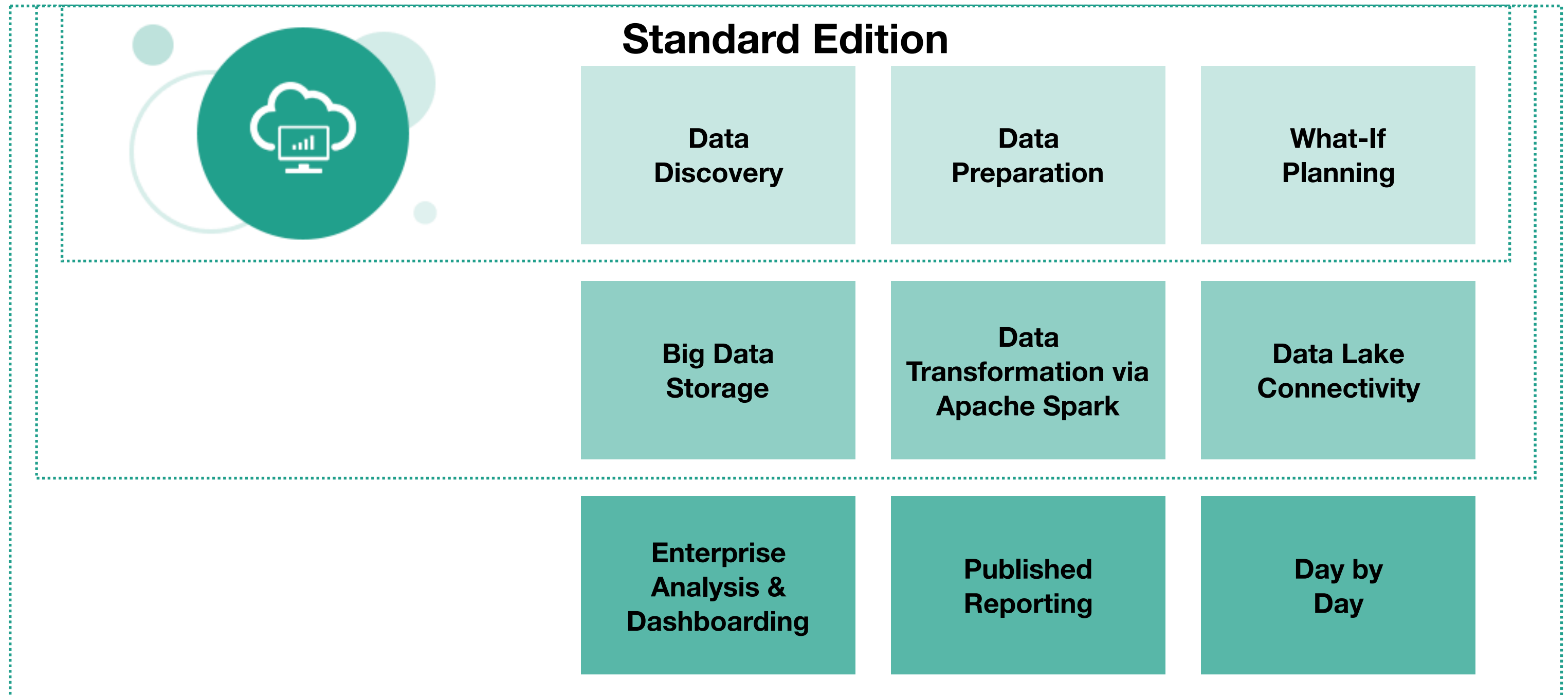
OAC Options



Analytics Cloud (Ex Autonomous)

- All Managed By Oracle so...
 - No “OBIEE Style” Customisations
 - Possible to change few parameters (more expected to be added)
 - No Access To Logs
 - Feels Serverless - you consume, you don't manage

Three Edition Options



Two Purchasing Options



Monthly Flex

Based on **Universal Credits** model
12 month minimum tenure
Payments made in **advance**
Unused credits are **forfeited**

Suitable for:

Predictable, production workloads
Long running platforms



Pay As You Go

Based on **Universal Credits** model
No minimum tenure
Payments made in **arrears**
Based on **consumption**

Suitable for:

Rapid Prototyping
Testing & Sampling
Elastic Scalable

Several Shape Options

- OAC instances are provisioned in Oracle Compute Units (OCPU's) shapes to satisfy different requirements
- The shape can be altered after service creation
 - ▶ Flex capacity up (or down) based on immediate need

Which compute shape do you think you'll need?	Shape Options	Maximum Row Limits
Oracle Analytics Cloud offers a set of compute shapes that are optimized for different scenarios. The larger the compute shape, the greater the processing power. If you're not sure which shape to use, contact your sales team to discuss sizing guidelines. The compute shape you select also determines configuration limits, such as the maximum number of rows you can return from any data source query or download from a report to CSV file.	• 1 OCPU (for trials)	• 125,000 rows
	• 2 OCPU	• 500,000 rows
	• 4 OCPU	• 500,000 rows
	• 6 OCPU	• 500,000 rows
	• 8 OCPU	• 500,000 rows
	• 12 OCPU	• 500,000 rows
	• 16 OCPU	• 750,000 rows
	• 24 OCPU	• 750,000 rows
	• 32 OCPU	• 750,000 rows
	• 52 OCPU	• 750,000 rows

* Number of OCPUs

- 1
- 2
- 4
- 6
- 8
- 10
- 12
- 16
- 24
- 32
- 52

Bring Your Own License (BYOL)

- Relevant to organisations with an existing, on-premises Oracle licensing estate
- Now applies to PaaS services (e.g. Analytics!)
 - ▶ e.g. Analytics!
 - ▶ Mapping rules apply
 - ▶ Roughly 1 Processor license = 2 OCPU's
- Maintained through your annual support contract
- Simplifies decision to move to the cloud:
 - ▶ Reduces an **entry barrier** to the cloud
 - ▶ Reduces the **operating cost** of using the cloud



Oracle Universal Credit Pricing

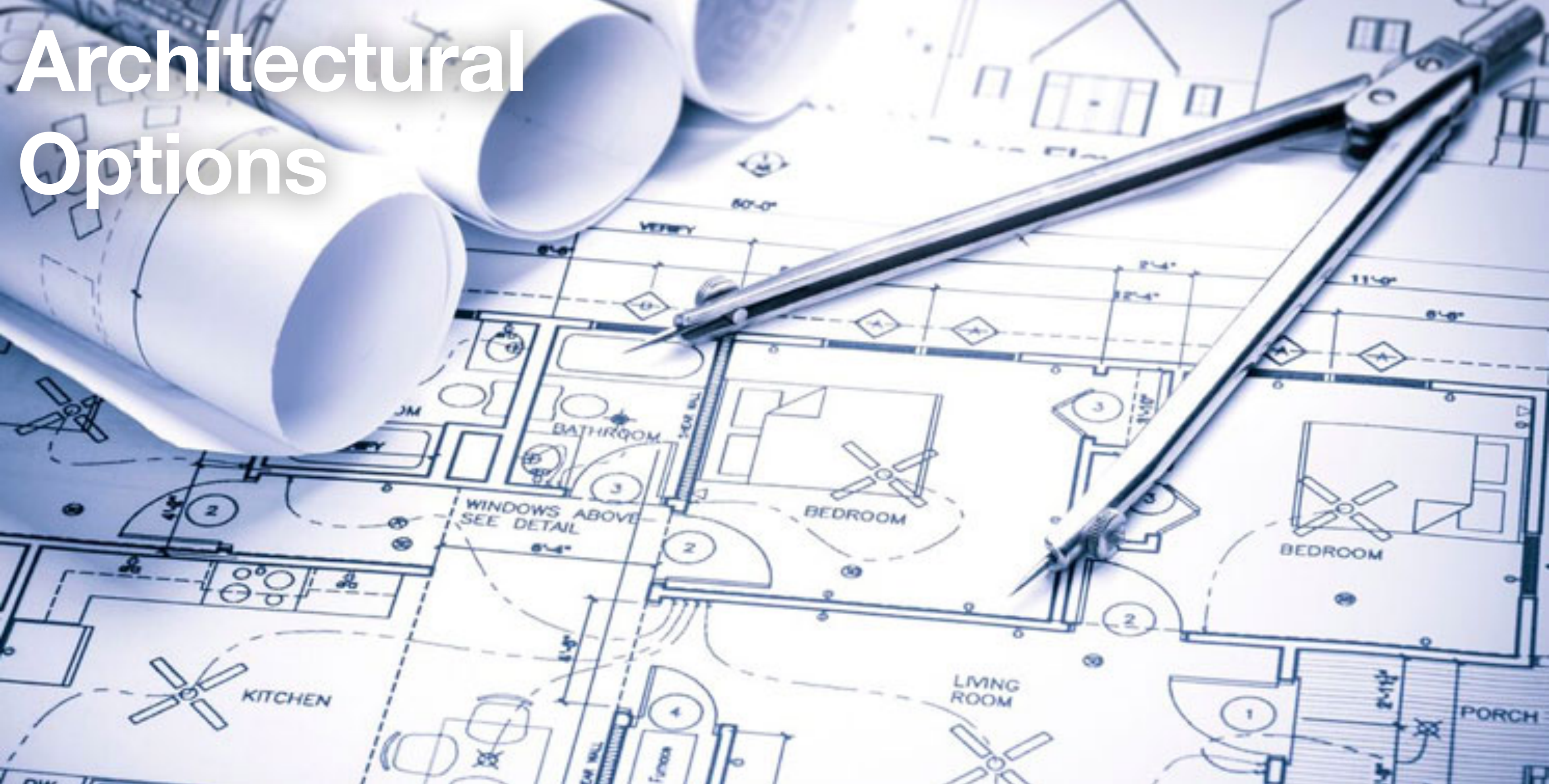
USD - US Dollar (\$) ⊕ ↓

Analytics

Product	Pay As You Go	Monthly Flex	Part #	Metric
Enterprise	\$6.0485	\$4.0323	B88303	OCPU Per Hour
Standard	\$2.0161	\$1.3441	B88304	OCPU Per Hour
Data Lake	\$4.0323	\$2.6882	B88434	OCPU Per Hour
Standard - BYOL	\$0.2903	\$0.1935	B89633	OCPU Per Hour
Data Lake - BYOL	\$0.2903	\$0.1935	B89634	OCPU Per Hour
Enterprise - BYOL	\$0.2903	\$0.1935	B89635	OCPU Per Hour

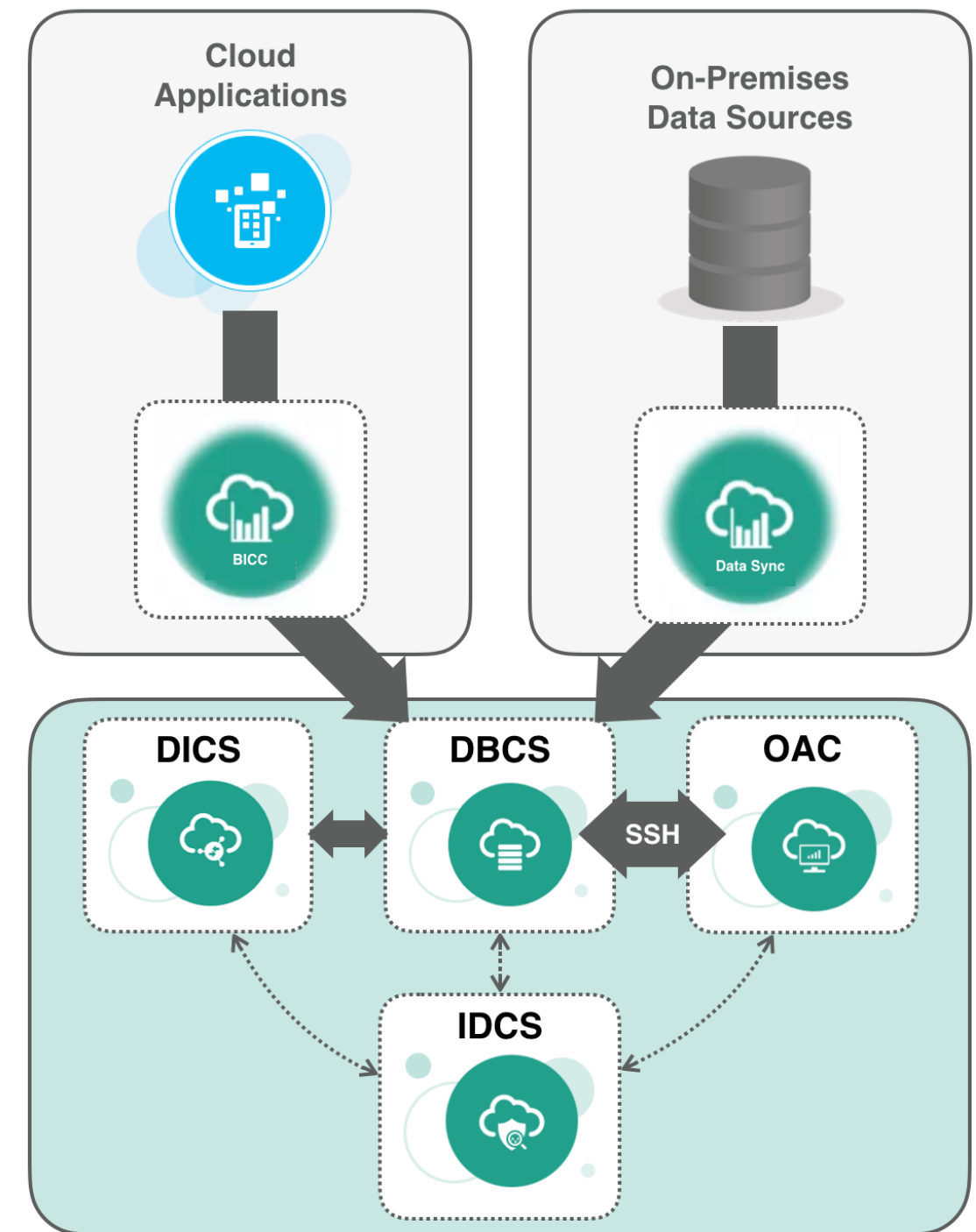
* As presented on https://cloud.oracle.com/en_US/ucpricing as at 08/10/2018

Architectural Options



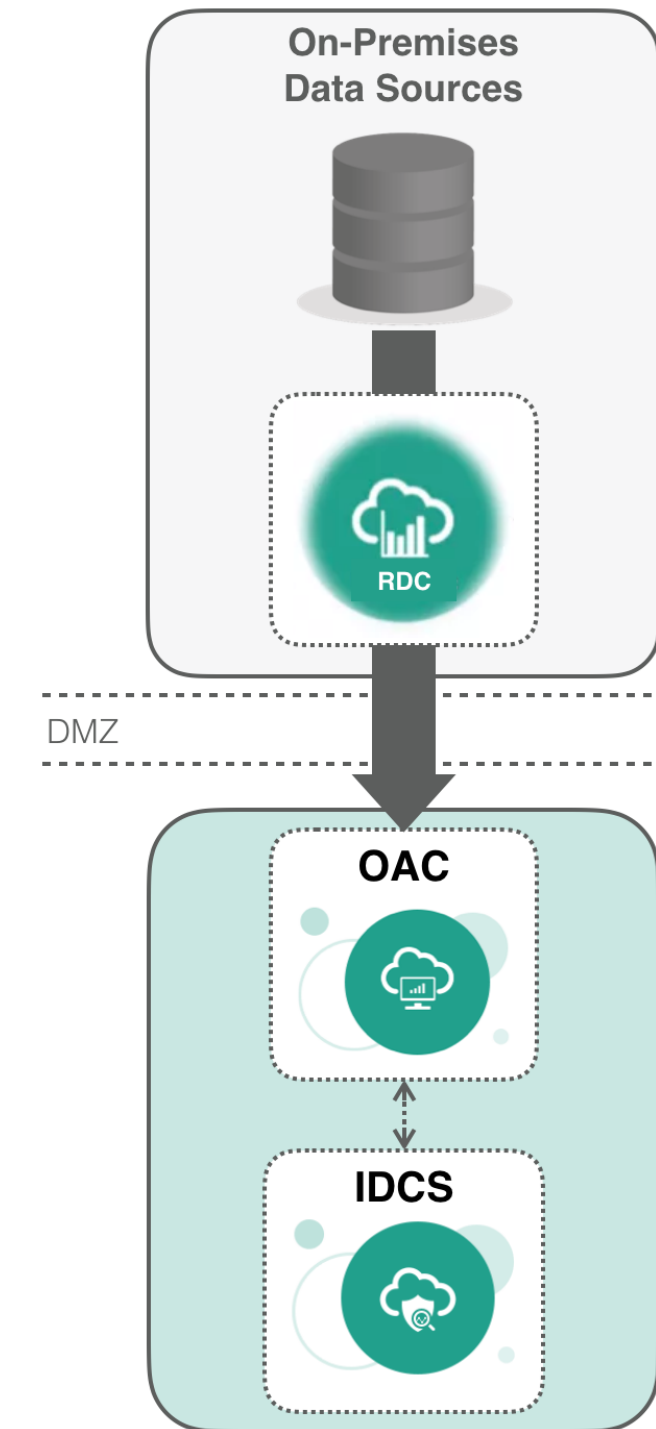
Oracle Cloud

- Simplest integration architecture:
 - ▶ Data held in Oracle Database Cloud Service (DBCS)
 - ▶ ETL via Oracle Data Integration Platform Cloud (DIPC)
- Data acquisition from Cloud Applications:
 - ▶ BI Cloud Connector
 - ▶ Goldengate
 - ▶ OAC's new Data Replication features
- Data acquisition from on-premises applications:
 - ▶ Data Sync
 - ▶ APEX Data Loader
 - ▶ SQL Developer tools
 - ▶ Data Pump



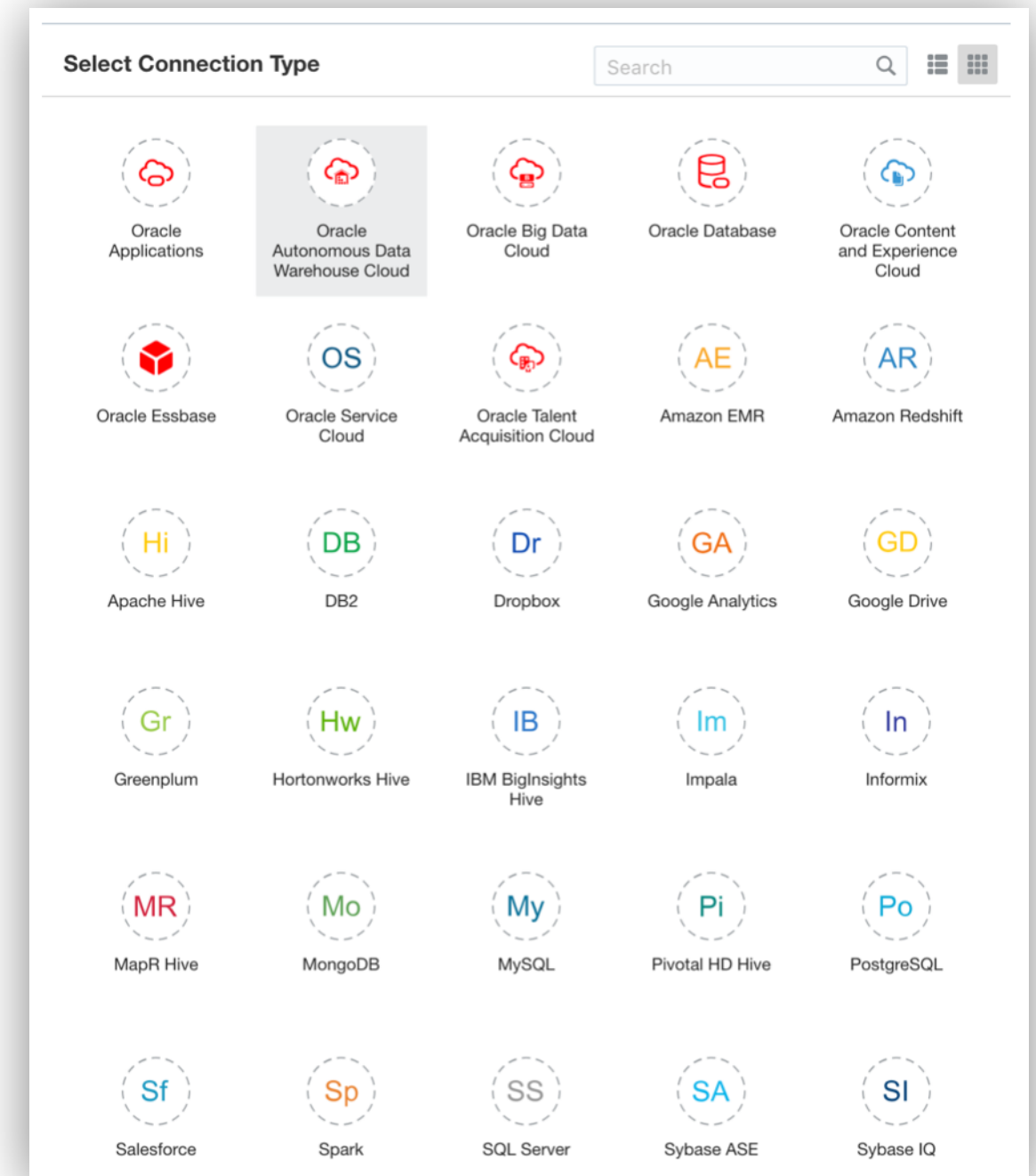
Hybrid

- Database remains on-premises
 - ▶ Frequently a staging post for full migration
- Data access via **Remote Data Connector**
 - ▶ Runs on dedicated application server (WLS/Tomcat)
 - ▶ Secure connectivity via public/private SSL key
 - ▶ Supports Oracle, DB2, Teradata, SQL Server
- Beware performance challenges
 - ▶ Potential latency due to network bandwidth
 - ▶ Check network capacity and test carefully



Multi-Cloud

- Commonly adopted cloud strategy
 - ▶ Spread investment across different cloud environments
 - ▶ Mix private and public cloud workloads
- Data Sets have a broad support for connectivity
 - ▶ Relational, Big Data, Semi-structured & proprietry
- Data Model supports fewer options (via RDC)
 - ▶ Oracle, DB2, Terdata, SQL Server





OAC 5.1 New Features

OAC Summer 2018 Selected New Features Overview

A. Data Preparation

1. Recommendations – Transformations & Enrichments
2. Data Preparation Scripts

B. Data Flows & Data Sources

3. Incremental Processing
4. Parameterized Sources & Output
5. Dataflow Branching Node
6. Function Shipping Calculations to BDC
7. Output Data Set Aggregation Control
8. Dataflow Status Inspector
9. Data Replication (New Sources & Targets)
10. Local Subject Area Data Set
11. Multiple ADWC Connections

C. Data Visualizations

12. New Visualizations :
Grid Heatmap, Correlation Matrix, Picto Charts, 100% Stacked Bar, Area
13. Maps - Multiple Data Layers
14. Maps - Dynamic Heatmap
15. Maps – Google & Baidu base maps
16. Tool Tip Grammar Support
17. Experience Enhancements
 - Value as % for Treemap & Sunburst
 - Auto Save
 - Zoom to Value range for Axis
 - Copy Data to Clipboard
18. Publish Event Action to External Portal

D. Other

19. Data Set Replace

20. Explain Enhancements
21. Object Inspectors Consistency
22. Data Sets Permission-ing
23. Console Menu Reorganized
24. User Profile
25. Tabless Navigation
26. Data Set Storage Management
27. Search/Ask Improvements
28. Day by Day Improvements

D. BI Publisher

29. BIP Improvements

E. Essbase

30. Essbase Improvements

OAC 5.1 Selected New Features Overview

A. Admin

1. Pod to Pod migration of selective objects
2. Configure System Settings & Restart services
3. Catalog Manager
4. DSS/Data Prep Public Rest APIs
5. Quick Start Templates

B. Data Sources & Data Viz

6. Autonomous Transaction Processing & UX changes to ADW connection
7. Suppress row on/off, show duplicates

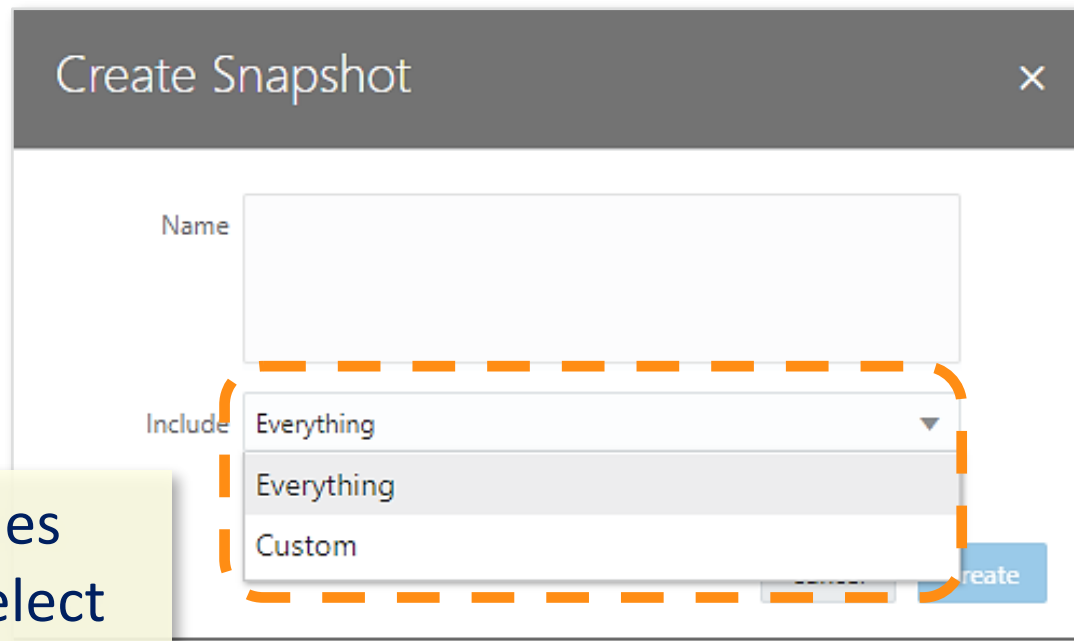
D. BI Publisher

8. Bar File inclusion
9. Essbase POV Parameter Support

D. Essbase

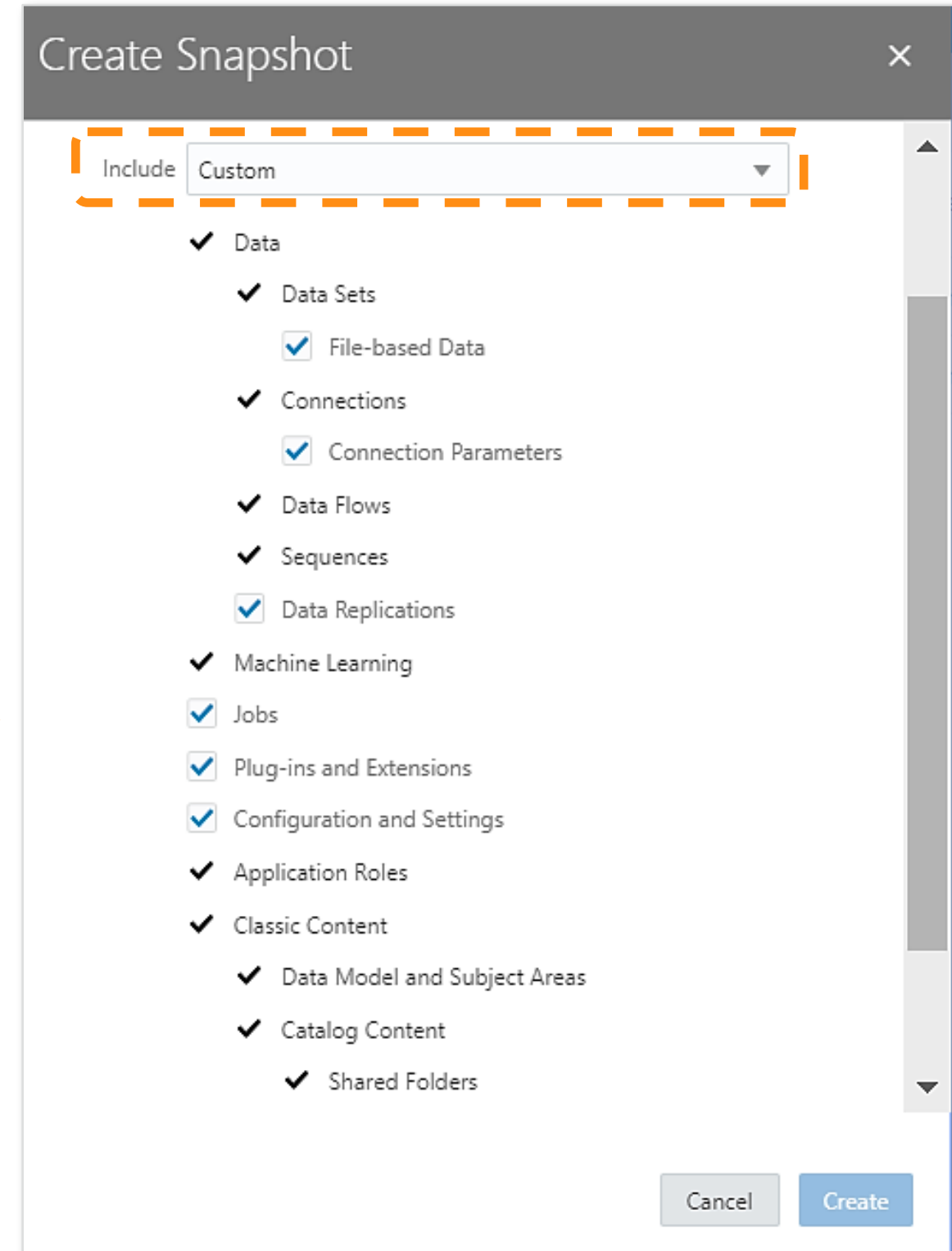
12. Essbase RDC connector
13. Oracle Autonomous Database support
14. Calc Tuple Support
15. Auto generate aggregate views
16. New Gallery templates
17. Start/stop ability from PSM UI for Oracle Managed
18. Smart View support for Ancestor On Top
19. Outline Support for Alias Tables in Web UI
20. Cube Designer - Formula Editor members tree
21. New Gallery Templates
- 22....

1 – POD to POD migration - Snapshot



Snapshot includes everything or select custom content

Custom select types of object to include in Snapshot



1 – POD to POD migration - Restore

Replace Snapshot content only

Restore Snapshot

Snapshot Name test

Description Includes Data, Data Sets, File-based Data, Connections, Connection Parameters, Data Flows, Sequences, Data Replications, Machine Learning, Jobs, Plug-ins and Extensions, Configuration and Settings, Application Roles, Classic Content, Data Model and Subject Areas, Catalog Content, Shared Folders, Projects, User Folders

Created By admin

Created On 1/14/2019, 12:02:49 PM

Restore Reason *A short description to help you remember why you restored the snapshot.*

Restore Replace snapshot content only

Replace everything

Restore Snapshot

Snapshot Name test

Description Includes Data, Data Sets, File-based Data, Connections, Connection Parameters, Data Flows, Sequences, Data Replications, Machine Learning, Jobs, Plug-ins and Extensions, Configuration and Settings, Application Roles, Classic Content, Data Model and Subject Areas, Catalog Content, Shared Folders, Projects, User Folders

Created By admin

Created On 1/14/2019, 12:02:49 PM

Restore Reason *A short description to help you remember why you restored the snapshot.*

Restore Replace everything

Replace select objects

Restore Snapshot

Restore Custom

- ✓ Data
 - ✓ Data Sets
 - ✓ File-based Data
 - ✓ Connections
 - ✓ Connection Parameters
 - ✓ Data Flows
 - ✓ Sequences
 - ✓ Data Replications
- ✓ Machine Learning
- ✓ Jobs
- ✓ Plug-ins and Extensions
- ✓ Configuration and Settings
- ✓ Application Roles
- ✓ Classic Content

2 – Configure System Settings

ORACLE Analytics Cloud

Console

Extensions

Search

Maps

Social

Search Index

Safe Domains

Service Administratio...

Administer Users & Roles

Manage Snapshots

Manage Connections

Configure Virus Scanner

Monitor Sessions & Query Caches

Issue SQL

Monitor Deliveries

Configure Mail Settings

Configure System Settings

Launch System Settings from Console

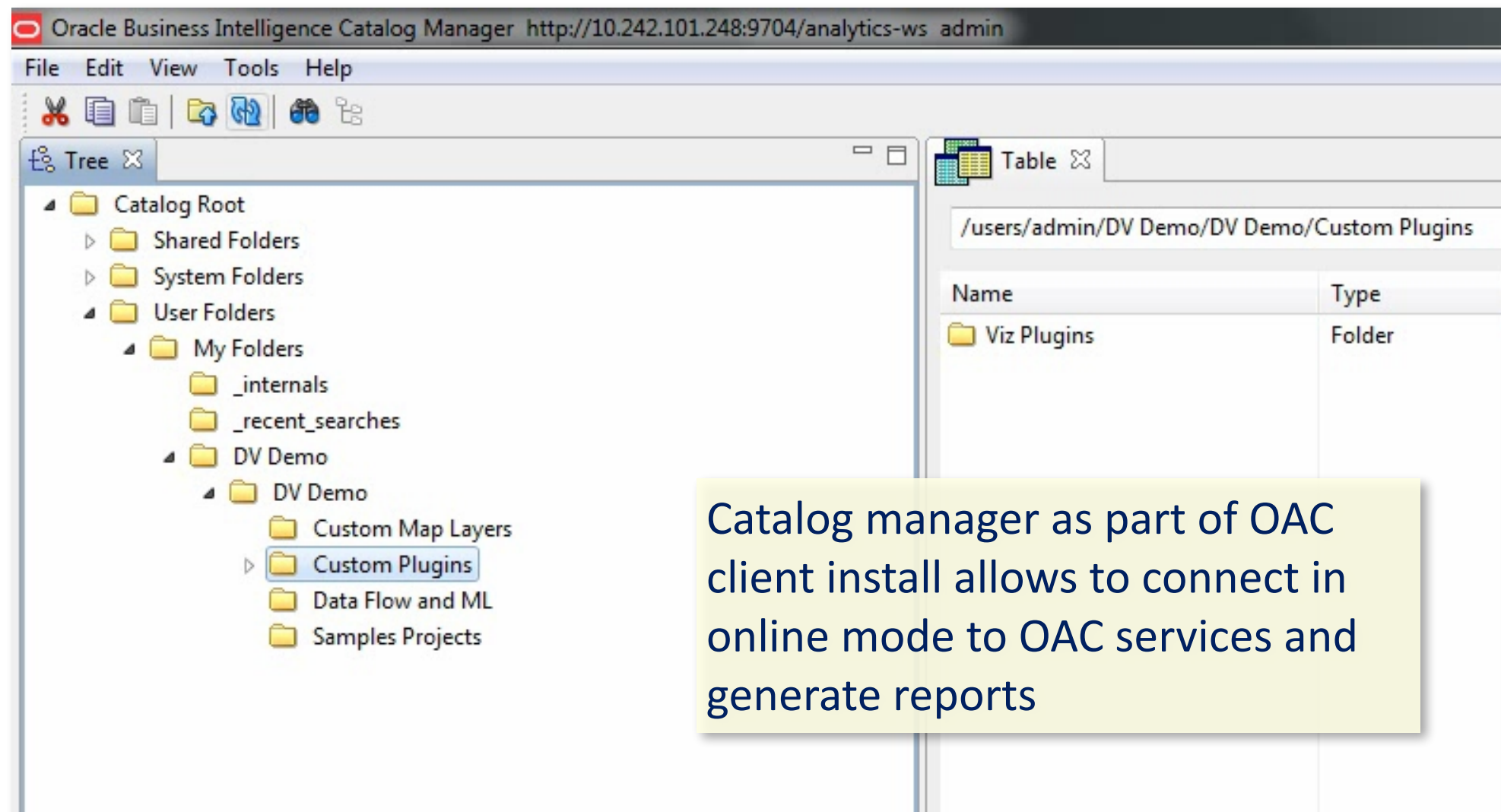
Edit parameters values for your system and restart services

ORACLE System Settings Admin ▾

Restart

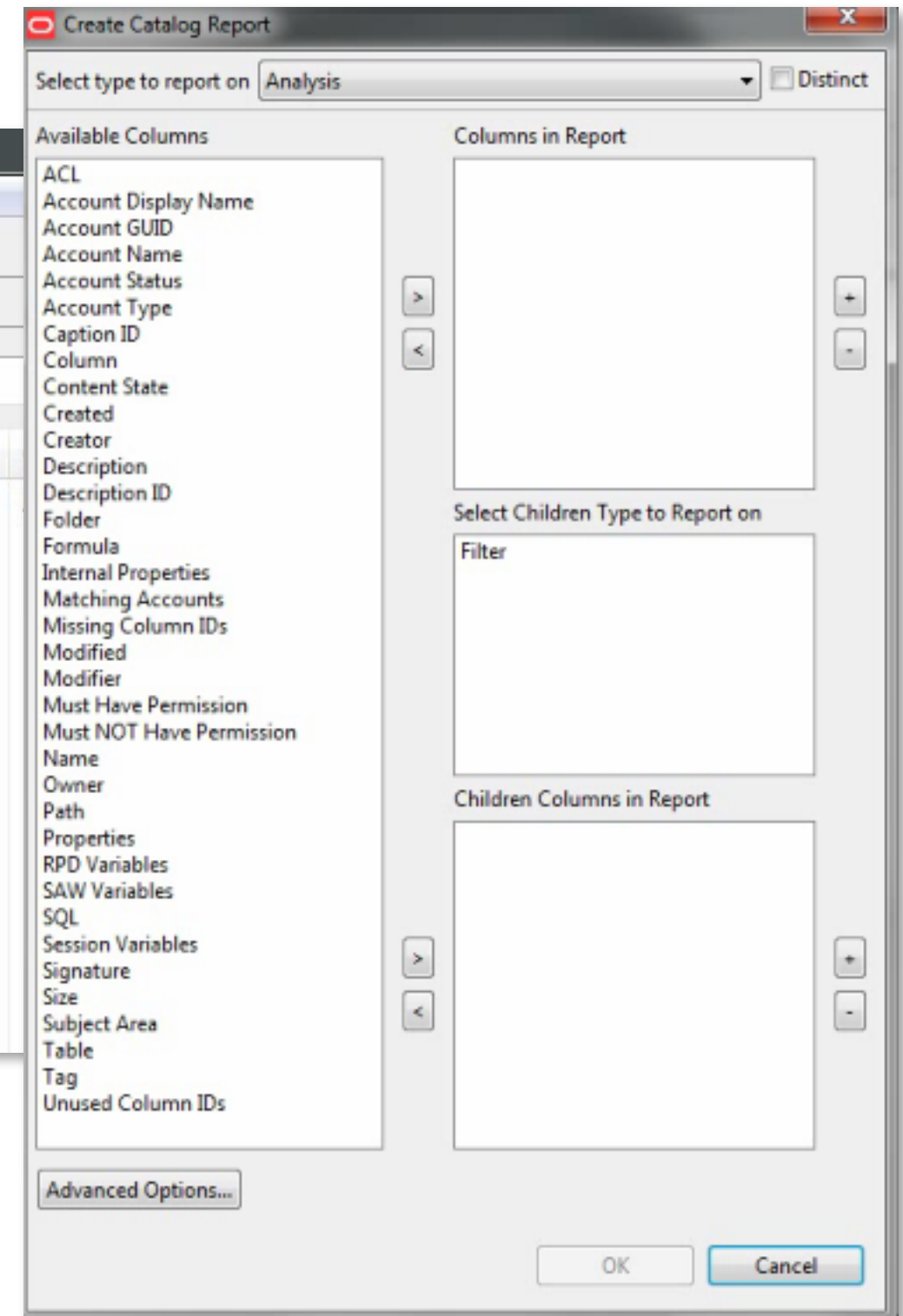
Property Name	Property Value
Currencies Xml	
Case Insensitive Auto Complete	true
User Currency Preferences Xml	MatchAll
Support Auto Complete	false
Show Null Value When Column Is Nullable	always
Allow HTML Content	false
Default Data Offset Timezone	

3 – Catalog Manager connecting to OAC



Catalog manager as part of OAC client install allows to connect in online mode to OAC services and generate reports

The URL should be of the following format for actual OCI pods:
`https://<hostname>:443/analytics-ws`



4 – DSS/Data Prep Public Rest APIs

swagger

<http://slc07rmk.us.oracle.com:9704/datasetsvc/public/swagger>

Authorize Explore

DSS/Data Prep Swagger Public Spec [.../datasetsvc/public/swagger.json](#)

DSS/Data Prep Swagger Public Spec

GET	/v4/connections	Returns a list of all connections
POST	/v4/connections	Create a connection with parameter json
DELETE	/v4/connections/{connection-uri}	Delete a connection
GET	/v4/connections/{connection-uri}	List information of a single connection
PUT	/v4/connections/{connection-uri}	Update the metadata of a connection
GET	/v4/connections/{connection-uri}/acl	Get the ACL for a connection
PUT	/v4/connections/{connection-uri}/acl	Set the ACL for a connection
PUT	/v4/connections/{connection-uri}/actions	Delete all or selective replication schema tables for a target cloud replication connection object
GET	/v4/connections/{connection-uri}/connection-metadata-xml	Get the metadata XML for a connection
PUT	/v4/connections/{connection-uri}/connection-metadata-xml	Replace the metadata XML for a connection
PUT	/v4/connections/{connection-uri}/credential	Update a connection credentials
GET	/v4/connections/{connection-uri}/object-list{path-separator}{directory-uri}	Get object listing for a connection
GET	/v4/connections/{connection-uri}/objects{path-separator}{object-id}	Get replication runtime details for a target cloud replication connection object
PUT	/v4/connections/{connection-uri}/objects{path-separator}{object-id}	Update replication runtime details for a target cloud replication connection object
PUT	/v4/connections/{connection-uri}/objects{path-separator}{object-id}/filters	Validate filter query for a source cloud replication connection object
GET	/v4/dataflows	Get metadata for dataflows
POST	/v4/dataflows	Create a dataflow
GET	/v4/dataflows/jobs	
DELETE	/v4/dataflows/{dataflow-id}	Delete a dataflow
GET	/v4/dataflows/{dataflow-id}	Get the metadata of a dataflow

50 + available
DSS REST API
Calls in OAC

PUT	/v4/dataflows/{dataflow-id}	Update a dataflow
POST	/v4/dataflows/{dataflow-id}/actions	Perform execute/stop action on a dataflow
GET	/v4/dataflows/{dataflow-id}/jobs	Get all jobs in a dataflow
GET	/v4/dataflows/{dataflow-id}/jobs/{job-id}	Get status of a particular job in a dataflow
GET	/v4/dataflows/{dataflow-id}/last-ingest-values	Get datasets last values
GET	/v4/dataflows/{dataflow-id}/status	Get dataflow status
GET	/v4/dataflows/{dataflow-uri}/acl	Get the ACL for the dataflow
PUT	/v4/dataflows/{dataflow-uri}/acl	Set the ACL for the dataflow
GET	/v4/datasets	Get metadata for datasets
PUT	/v4/datasets	Finalize datasets
POST	/v4/datasets/{dataset-id}/actions	Invoke profile job on a particular dataset
DELETE	/v4/datasets/{dataset-uri}	Delete a dataset
GET	/v4/datasets/{dataset-uri}	Get attributes of a dataset
POST	/v4/datasets/{dataset-uri}	Set attributes of a dataset
PUT	/v4/datasets/{dataset-uri}	Replace a dataset and metadata
GET	/v4/datasets/{dataset-uri}/acl	Get the ACL for a dataset
PUT	/v4/datasets/{dataset-uri}/acl	Set the ACL for a dataset
GET	/v4/datasets/{dataset-uri}/biserver-metadata-xml	Get the BI Server metadata xml of a dataset
PUT	/v4/datasets/{dataset-uri}/biserver-metadata-xml	
GET	/v4/datasets/{dataset-uri}/canonical-data	Get the canonical data for a dataset
GET	/v4/datasets/{dataset-uri}/provider-options-xml	
PUT	/v4/datasets/{dataset-uri}/provider-options-xml	
GET	/v4/datasets/{dataset-uri}/rawfile	Get the raw file of the dataset
HEAD	/v4/datasets/{dataset-uri}/rawfile	
PUT	/v4/datasets/{dataset-uri}/rawfile	Replace the rawdata for a dataset
GET	/v4/datasets/{dataset-uri}/schema	Get schema of a dataset
POST	/v4/datasets/{dataset-uri}/schema	Set schema of a dataset
GET	/v4/datasets/{dataset-uri}/type-options-xml	Returns the type options xml of a dataset
PUT	/v4/datasets/{dataset-uri}/type-options-xml	Replace the type options xml of a dataset
PUT	/v4/providers/managed/upload	Upload a managed dataset
POST	/v4/providers/{provider-name}{path-separator}{version}/cert	Upload certificate for a provider

5 – Quick Start Templates

Create Instance Cancel Custom

QuickStarts

Start with a common configuration or click **Custom** to choose from all available options.

*Instance Name: oac979820

Self-Service Analytics

Standard Edition offers you self-service data visualization and data preparation. Explore and visualize business data from various data sources, including databases, spreadsheets, Oracle applications, big data and more.

Create

Includes:

- Self-service data visualization
- Self-service data preparation
- Self-service data enrichment

Learn More

Essbase

Essbase Edition offers business modeling with the Essbase multidimensional OLAP (Online Analytical Processing) engine.

Create

Includes:

- Collaborative data collection
- Scenario modeling
- What-if analysis

Learn More

Enterprise Analytics

Enterprise Edition offers you enterprise-wide analytics. Build sophisticated data models to support enterprise business definitions and analysis.

Create


Includes:

- Enterprise data models
- Enterprise reports and dashboards
- Pixel-perfect reports
- Information delivery
- Self-service data visualization and preparation (blend self-service and enterprise data)
- Day by Day mobile app

Instances

Instances

Instance Name Search by instance name or tags

 oac953642	Status: Creating service ...	Submitted On: Jan 14, 2019 7:58:47 PM UTC
		OCPU: 0

As of Jan 14, 2019

6 – Data Sources ATP/ADW Connectors

Upload wallet file



Oracle Autonomous Transaction Processing

Create Connection

Oracle Autonomous Data Warehouse Cloud

* Connection Name

Description

* Client Credentials

* Username

* Password

* Service Name

Create Connection

Oracle Autonomous Transaction Processing

* Connection Name

Description

* Client Credentials

* Username

* Password

* Service Name

- No more need to open wallet file details manually :
- Host and port # are populated automatically
 - Drop down on service name

7 – Suppress row, show duplicates

R61 Geo Country Code, R69 Area C...

General

Title Auto

Type Table

Legend Auto

Suppress Repeating Values Off

Show Duplicate Rows Off

Suppresses repeating values

Show Duplicate Rows (dataset grain)

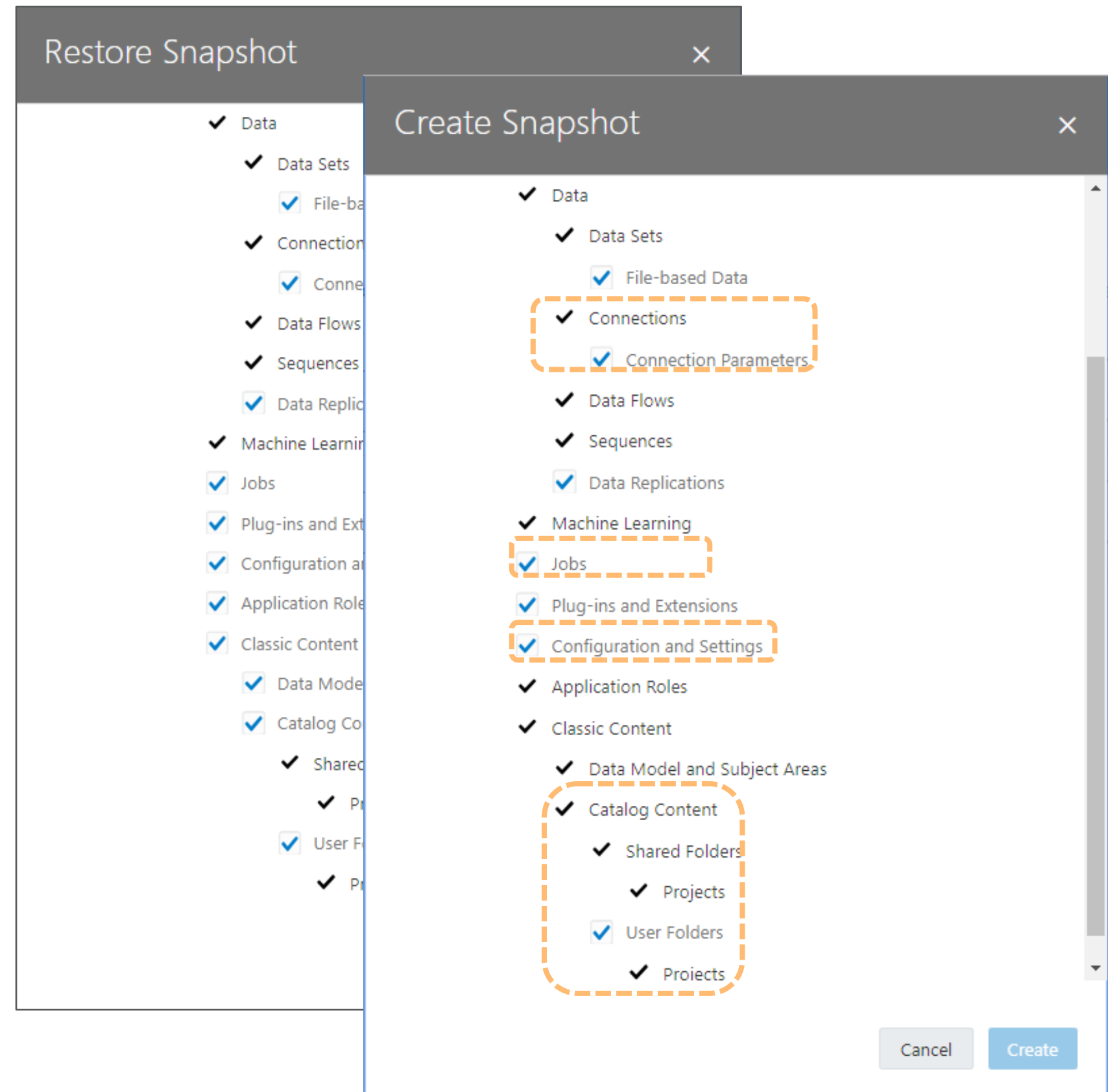
Product Category	Product Sub Category
Furniture	Bookcases
Furniture	Chairs & Chairmats
Furniture	Office Furnishings
Furniture	Tables
Office Supplies	Appliances
Office Supplies	Binders and Binder Acces
Office Supplies	Envelopes
Office Supplies	Labels
Office Supplies	Paper
Office Supplies	Pens & Art Supplies
Office Supplies	Rubber Bands
Office Supplies	Scissors, Rulers and Trin
Office Supplies	Storage & Organization
Technology	Computer Peripherals
Technology	Copiers and Fax
Technology	Office Machines
Technology	Telephones and Communication
Total	

Product Category	Product Sub Category	Sales
Furniture	Bookcases	370,475.59
	Chairs & Chairmats	1,046,332.70
	Office Furnishings	445,605.98
	Tables	1,030,879.05
Office Supplies	Appliances	431,437.26
	Binders and Binder Accessories	585,361.54
	Envelopes	126,645.07
	Labels	23,220.91
	Paper	251,643.77
	Pens & Art Supplies	103,130.53
	Rubber Bands	8,412.39
	Scissors, Rulers and Trimmers	40,087.72
	Storage & Organization	561,919.82
Technology	Computer Peripherals	470,248.59
	Copiers and Fax	547,260.50
	Office Machines	1,077,394.46
	Telephones and Communication	1,379,944.12
Total		8,500,000.00

547,260.50
1,077,394.46
1,379,944.12
8,500,000.00

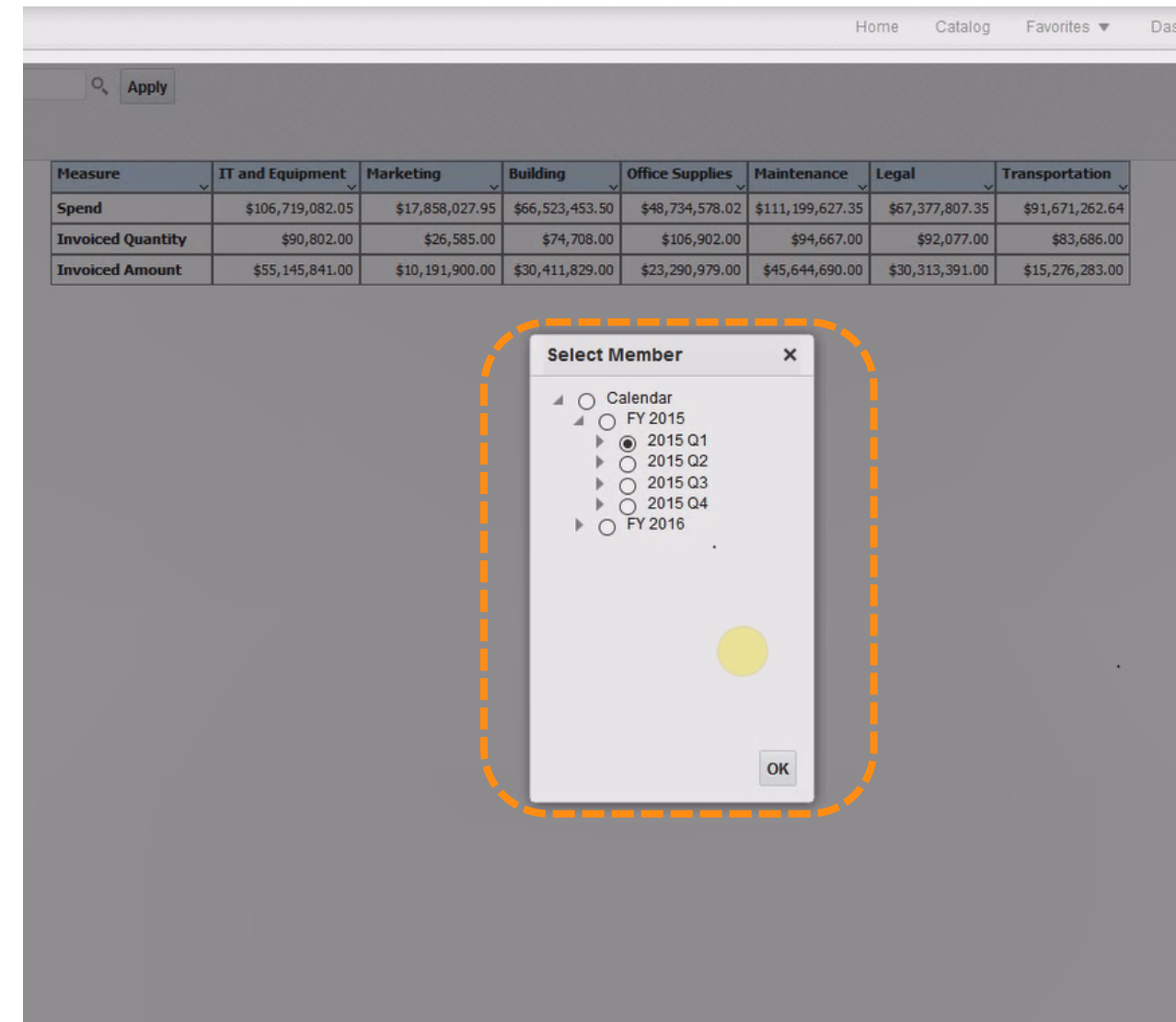
8-BIP : BAR Snapshot Support

- BI Publisher artefacts are now included in BAR file. It includes
 - BI Publisher Catalog Content
 - Data Source Connections
 - Runtime Properties
 - Scheduled Jobs
 - User Credentials
- Custom Selections for BI Publisher in a Snapshot:
 - **Connection Parameters:** For Data source Connections & User Credentials
 - **Jobs:** For Schedule Jobs
 - **Configuration and Settings:** For Runtime properties
 - **Catalog Content**



9-BIP : Essbase POV Parameter Support

- Now you can design your report against Essbase using POV as parameter. The POV parameter allows to select hierarchical member dimensions in the report
- Earlier you could create a report against Essbase data source using MDX query with POV member dimension as static selection.



The screenshot displays an Essbase report interface. At the top, there are navigation links: Home, Catalog, Favorites, and Das. Below this is a search bar with the text 'Apply'. The main content is a table with the following data:

Measure	IT and Equipment	Marketing	Building	Office Supplies	Maintenance	Legal	Transportation
Spend	\$106,719,082.05	\$17,858,027.95	\$66,523,453.50	\$48,734,578.02	\$111,199,627.35	\$67,377,807.35	\$91,671,262.64
Invoiced Quantity	\$90,802.00	\$26,585.00	\$74,708.00	\$106,902.00	\$94,667.00	\$92,077.00	\$83,686.00
Invoiced Amount	\$55,145,841.00	\$10,191,900.00	\$30,411,829.00	\$23,290,979.00	\$45,644,690.00	\$30,313,391.00	\$15,276,283.00

Below the table, a 'Select Member' dialog box is open, showing a hierarchical tree structure. The tree is expanded to show 'FY 2015', which is further expanded to show '2015 Q1', '2015 Q2', '2015 Q3', and '2015 Q4'. The '2015 Q1' member is selected, indicated by a radio button. There is also an 'OK' button at the bottom right of the dialog box.

Oracle Analytics Cloud From A to Z

ITOUG, 30th Jan - 1st Feb 2019